

WOOD COATINGS

BRANT



INDEX

PRIMERS AND BASECOATS

POLYURETHANE BASECOATS	5
POLYESTER BASECOATS	9
NITROCELLULOSE BASECOATS	10
ISOLATING AND ADHESION PRIMERS	11

CLEAR TOPCOATS

POLYURETHANE CLEAR TOPCOATS	13
ACRYLIC CLEAR TOPCOATS	15
NITROCELLULOSE CLEAR TOPCOATS	17

TINTING SYSTEM

CONVERTERS	19
------------------	----

PIGMENTED TOPCOATS

POLYURETHANE PIGMENTED TOPCOATS	21
ACRYLIC PIGMENTED TOPCOATS	22
NITROCELLULOSE PIGMENTED TOPCOATS	23
WATERBORNE PIGMENTED TOPCOATS	24

STAINS

STAINS	27
--------------	----

PATINAS

ACRYLIC BASE FOR PATINAS	29
--------------------------------	----

SPECIAL EFFECTS

METALLIC AND PEARL PASTES	31
---------------------------------	----

OTHER MATERIALS

TRANSPARENT CASTING EPOXY RESIN	33
---------------------------------------	----

PRIMERS AND BASECOATS

White PU basecoat BP13.01.00

PU basecoat for raised cabinet doors, turned and carved furniture parts, polyurethane foam. It has very high solid content and filling power. The basecoat is thixotropic, dries quickly, easy to sand.

Parameter	Value
Application:	Conventional, airmix, airless spray
Mixing ratio (by weight):	BP13.01.00 100 HP13.00.00 30 Thinner 10-20
Pot life (at 20°C, h):	3-3,5
Recommended application weight (g/m ²):	150-180
Number of coats:	1-3
Interval between coats (at 20°C, min):	min 20, max 60
Drying time (100 g/m ² at 20°C, min):	Dust free: 10-15 Touch dry: 25-30 Sandable: 60-80 Stackable: 12 hours
Forced drying (100 g/m ² at 40°C, min):	Sandable: 50 Stackable: 180

White PU basecoat BP33.01.00

PU basecoat for for large surfaces (doors, flat panels), turned and carved furniture parts, polyurethane foam. Suitable for horizontal and vertical surfaces. Prevents defects on resinous pinewood. The basecoat has excellent leveling, good thixotropy, dries quickly.

Parameter	Value
Application:	Conventional, airmix, airless spray
Mixing ratio (by weight):	BP33.01.00 100 HP50.00.00 30 Thinner 10-20
Pot life (at 20°C, h):	3
Recommended application weight (g/m ²):	100-180
Number of coats:	1-3
Interval between coats (at 20°C, min):	min 20, max 60
Drying time (100 g/m ² at 20°C, min):	Dust free: 10-15 Touch dry: 25-30 Sandable: 60-80 Stackable: 12 hours
Forced drying (100 g/m ² at 40°C, min):	Sandable: 3-0 Stackable: 180



White PU basecoat BP73.01.00

Premium quality PU basecoat for doors, bathroom and kitchen furniture. It has high hiding power, excellent leveling, high cracking resistance, resistance against over-sanding. After 2 hours of drying it can be sanded with automatic sanding machine.

Parameter	Value
Application:	Conventional, airmix spray
Mixing ratio (by weight):	BP73.01.00 100 HP73.00.00 50 Thinner 20-35
Pot life (at 20°C, h):	2
Recommended application weight (g/m ²):	130-220
Number of coats:	1-3
Interval between coats (at 20°C, min):	min 45, max 60
Drying time (100 g/m ² at 20°C, min):	Dust free: 10-15 Touch dry: 15-30 Sandable: 60-90
Forced drying (100 g/m ² at 40°C, min):	Sandable: 40

White PU basecoat BP53.01.00

PU basecoat for general use. It has a good hiding power and leveling, dries quickly, is easy to sand. Can be applied by manual or automatic spraying.

Parameter	Value
Application:	Conventional, airmix, airless spray
Mixing ratio (by weight):	BP53.01.00 100 HP19.00.00 20 Thinner 20-30
Pot life (at 20°C, h):	2
Recommended application weight (g/m ²):	100-150
Number of coats:	1-3
Interval between coats (at 20°C, min):	min 20, max 60
Drying time (100 g/m ² at 20°C, min):	Dust free: 5-10 Touch dry: 25-30 Sandable: 50-70
Forced drying (100 g/m ² at 40°C, min):	Sandable: 30

Colored PU basecoat BP31.XX.00

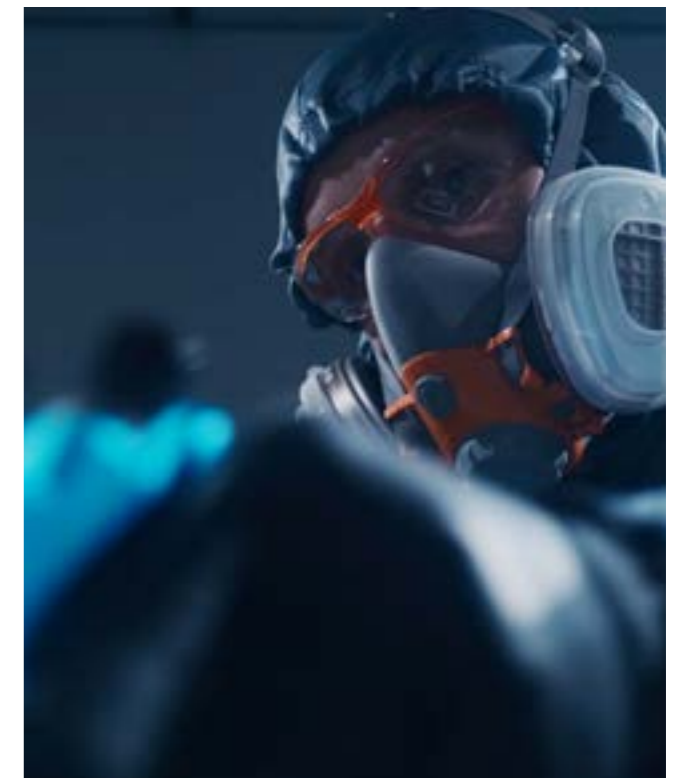
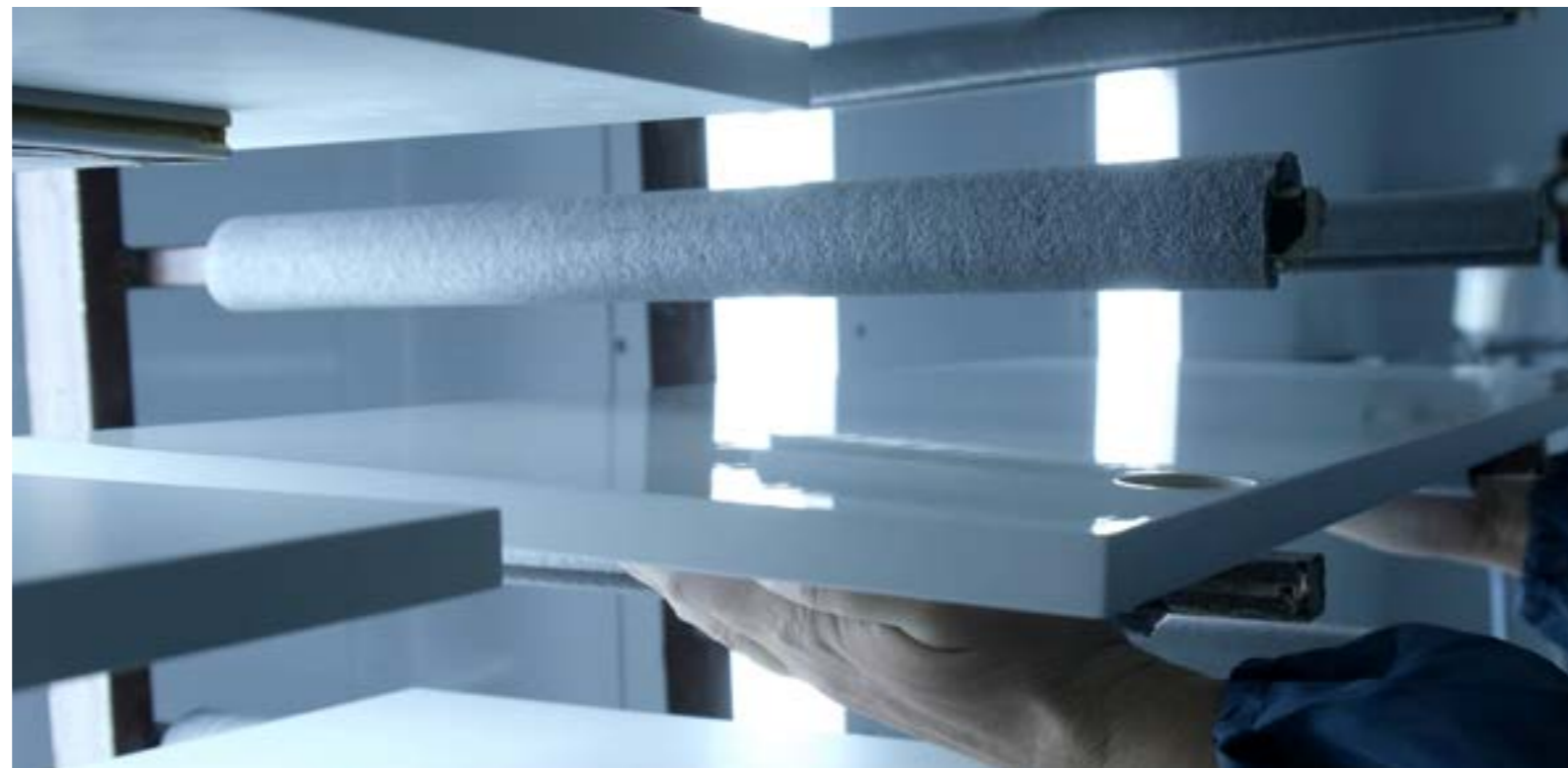
Pigmented PU basecoat with high hiding power and good thixotropy. It dries quickly, is easy to sand. The basecoat has good UV resistance and can be used as a substitute for enamel when finishing patinated polyurethane foam.

Parameter	Value
Color:	BP31.11.00 – Ivory BP31.81.00 – Milky brown BP31.82.00 – Dark brown BP31.83.00 – Coffee BP31.22.00 – Black
Application:	Conventional, airmix, airless spray
Mixing ratio (by weight):	BP31.XX.00 100 HP19.00.00 20 Thinner 20-30
Pot life (at 20°C, h):	2
Recommended application weight (g/m ²):	100-150
Number of coats:	1-3
Interval between coats (at 20°C, min):	min 20, max 60
Drying time (100 g/m ² at 20°C, min):	Dust free: 10-15 Touch dry: 25-30 Sandable: 60-80
Forced drying (100 g/m ² at 40°C, min):	Sandable: 30

Transparent PU basecoat BP61.00.00

Ultra-transparent PU basecoat for solid wood and veneer, suitable for multicoat systems on dark wood. It does not veil wood texture, has high wetting power, particularly suitable for open pore coatings. The basecoat is highly elastic, resistant to whitening caused by impacts. Suitable for parquet and stairs.

Parameter	Value
Application:	Conventional, airmix, airless spray
Mixing ratio (by weight):	BP61.00.00 100 HP61.00.00 50 Thinner 10-30
Pot life (at 20°C, h):	3-3,5
Recommended application weight (g/m ²):	80-130
Number of coats:	1-6
Interval between coats (at 20°C, min):	min 90, max 240
Drying time (100 g/m ² at 20°C, min):	Dust free: 30 Touch dry: 90 Sandable: 180 Stackable: 6-8 hours
Forced drying (130 g/m ² at 40°C, min):	Sandable: 60 Stackable: 120



Transparent PU basecoat BP38.00.00

All-purpose transparent PU basecoat suitable for open pore and closed pore coatings. It has good filling power and transparency, does not create haze when applied in 2-3 layers. The basecoat is fast drying and easy to sand, does not clog the abrasive.

Parameter	Value
Application:	Conventional, airmix, airless spray
Mixing ratio (by weight):	BP38.00.00 100 HP77.00.00 50 Thinner 30-40
Pot life (at 20°C, h):	2
Recommended application weight (g/m ²):	100-180
Number of coats:	1-3
Interval between coats (at 20°C, min):	min 40, max 60
Drying time (100 g/m ² at 20°C, min):	Dust free: 10 Touch dry: 25 Sandable: 60 Stackable: 120
Forced drying (100 g/m ² at 40°C, min):	Sandable: 40 Stackable: 60

Transparent PU basecoat BP77.00.00

PU basecoat with very high solids content. It harmonizes the surface. The basecoat is thixotropic, allows thick layer application, perfectly fills pores. It is widely used to replace polyester basecoats, for furniture made of pine, alder, for MDF and solid wood coffins.

Parameter	Value
Application:	Conventional, airmix, airless spray
Mixing ratio (by weight):	BP77.00.00 100 HP77.00.00 30 Thinner 30-40
Pot life (at 20°C, min):	80
Recommended application weight (g/m ²):	100-200
Number of coats:	1-2
Interval between coats (at 20°C, min):	min 20, max 40
Drying time (100 g/m ² at 20°C, min):	Dust free: 10 Touch dry: 20 Sandable: 50 Stackable: 90
Forced drying (100 g/m ² at 40°C, min):	Sandable: 30 Stackable: 50

White PE basecoat PE11.01.00

White polyester basecoat with very good leveling and low shrinkage. It does not crater at low temperatures. When using a special curing system, it has a long pot life (1 hour at 20°C).

Parameter	Value
Application:	Conventional, airmix spray
Mixing ratio (by weight):	PE11.01.00 100 EH01.00.00 2 EH02.00.00 2 Thinner 5-15
Pot life (at 20°C, min):	20-30
Recommended application weight (g/m ²):	200-350
Number of coats:	1-3
Interval between coats (at 20°C, min):	min 30, max 60
Drying time (250 g/m ² at 20°C, min):	Dust free: 90 Touch dry: 150 Sandable: 4 hours Stackable: 6 hours
Forced drying (250 g/m ² at 50°C, min):	Sandable: 120 Stackable: 120

Transparent PE basecoat PE11.00.00

Highly transparent polyester basecoat that does not veil wood texture. It has excellent leveling, is suitable for horizontal and vertical application, does not get «naughty» at low temperatures. It is easy sanded, does not clog the abrasive, provides gloss stability in high gloss coatings.

Parameter	Value
Application:	Conventional, airmix spray
Mixing ratio (by weight):	PE11.00.00 100 EH01.00.00 2 EH02.00.00 2 Thinner 5-15
Pot life (at 20°C, min):	20-23
Recommended application weight (g/m ²):	100-250
Number of coats:	2-4
Interval between coats (at 20°C, min):	min 30, max 50
Drying time (200 g/m ² at 20°C, min):	Dust free: 90 Touch dry: 150 Sandable: 4-6 hours Stackable: 6 hours
Forced drying:	Not recommended



White NC basecoat BN10.01.00

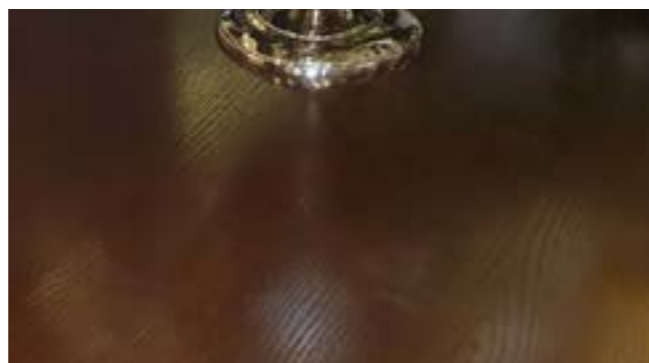
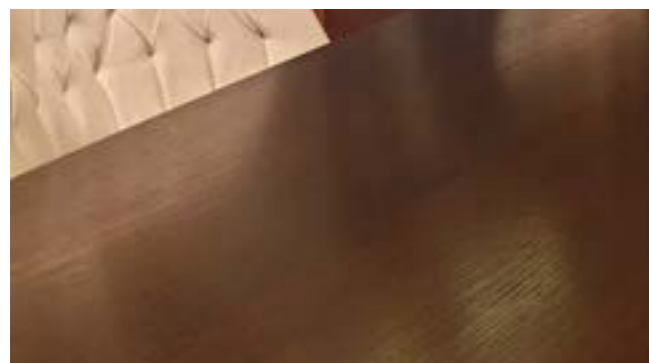
Versatile, fast drying white basecoat. It has high viscosity, high capacity of thinner, is easy to sand. The basecoat can be applied by manual and automatic spraying.

Parameter	Value
Application:	Conventional, airmix, airless spray
Mixing ratio (by weight):	BN10.01.00 100 Thinner 60
Pot life (at 20°C, min):	Not limited
Recommended application weight (g/m ²):	120-150
Number of coats:	2-3
Drying time (100 g/m ² at 20°C, min):	Dust free: 15 Touch dry: 20 Sandable: 60

Transparent NC basecoat BN10.00.00

Highly transparent, fast drying nitrocellulose basecoat for solid wood and veneered panels. It has high viscosity, high capacity of thinner, is easy to sand. The basecoat can be applied by manual and automatic spraying. Not suitable for white or chemically bleached surfaces.

Parameter	Value
Application:	Conventional, airmix, airless spray
Mixing ratio (by weight):	BN10.00.00 100 Thinner 110
Pot life (at 20°C, min):	Not limited
Recommended application weight (g/m ²):	120-150
Number of coats:	2-3
Drying time (100 g/m ² at 20°C, min):	Dust free: 15 Touch dry: 45 Sandable: 120



Isolating primer for MDF BP70.00.00

BP70.00.00 deeply penetrates into the porous MDF structure, equalizes density of the surface, improves adhesion, reduces absorption of subsequent coats, provides moisture resistance of the coating. When low thinned forms a thick film on the surface. The primer is fast drying and easy to sand.

Parameter	Value
Application:	Conventional, airmix, airless spray
Mixing ratio (by weight):	BP70.00.00 100 HP77.00.00 35 Thinner 30-60
Pot life (at 20°C, min):	60
Recommended application weight (g/m ²):	80-120
Number of coats:	1
Drying time (100 g/m ² at 20°C, min):	Dust free: 5 Touch dry: 15 Sandable: 120 Stackable: 90
Forced drying (100 g/m ² at 40°C, min):	Sandable: 40 Stackable: 60



Primer for solid wood and veneer BX22.00.00

Transparent primer for solid wood and veneer. When applied to porous veneer (fine-line, walnut, etc.) deeply impregnates and stabilizes it, prevents bubble formation. Protects tinted wood against fading in contact with PE basecoat in high gloss coatings. Minimizes the risk of defects formation on resinous wood (pine).

Parameter	Value
Application:	Conventional, airmix spray
Mixing ratio (by weight):	BX22.00.00 100 HX22.00.00 100 Thinner 0-30
Pot life (at 20°C, h):	4-6
Recommended application weight (g/m ²):	50-70
Number of coats:	1-2
Interval between coats (at 20°C, min):	min 60, max 120
Drying time (60 g/m ² at 20°C, min):	Dust free: 20 Touch dry: 60
Forced drying:	Not recommended

CLEAR TOPCOATS

High gloss PU topcoat PG56.00.00

It is characterized by high transparency and gloss level, good yellowing resistance, excellent hardness and resistance to scratches. Well fills the sanding marks, perfectly polished.

Parameter	Value
Application:	Spraying
Mixing ratio (by weight):	PG56.00.00 100 HP16.00.00 100 Thinner 10-20
Pot life (at 20°C, h):	5
Recommended application weight (g/m ²):	100-140
Drying time (100 g/m ² at 20°C, min):	Dust free: 20-25 Touch dry: 150-170 Sandable: 56 hours
Forced drying (100 g/m ²):	Evaporation at 20°C: 25 min Drying at 40°C: 360 min Cooling at 20°C: 20 min

High gloss PU topcoat PG50.00.00

Not intended for polishing. Recommended for complex shape surfaces (chairs, coffins and etc.). It is characterized by good leveling, high gloss level.

Parameter	Value
Application:	Spraying
Mixing ratio (by weight):	PG50.00.00 100 HP50.00.00 100 Thinner 0-30
Pot life (at 20°C, h):	10
Recommended application weight (g/m ²):	90-110
Drying time (100 g/m ² at 20°C, min):	Dust free: 25 Touch dry: 90 Sandable: 24 hours
Forced drying (100 g/m ²):	Evaporation at 20°C: 20 min Drying at 40°C: 180 min Cooling at 20°C: 20 min



Clear matt PU topcoat TP59.00.XX

Versatile clear matt topcoat for flat furniture parts, doors, panels. Gloss levels: 10, 20, 30, 40 or 80%. The varnish has excellent leveling, forms a homogeneous silky film with a uniform matt appearance. Highly transparent, does not veil wood texture, has a long pot life.

Parameter	Value
Application:	Spraying
Mixing ratio (by weight):	TP59.00.10 100 HP61.00.00 50 Thinner 35-45
Pot life (at 20°C, h):	4
Recommended application weight (g/m ²):	100-120
Drying time (100 g/m ² at 20°C, min):	Dust free: 10-15 Touch dry: 20-25 Sandable: 4 hours
Forced drying (100 g/m ²):	Evaporation at 20°C: 10-15 min Drying at 50°C: 30-40 min Cooling at 20°C: 10-15 min

Clear matt PU topcoat TP95.00.10

TP95.00.10 is a polyurethane based, two component, scratch and impact resistant interior self-sealer topcoat. It has high chemical and yellowing resistance, resistance to scratches and dry heat. The topcoat is fast drying and fine touch.

Parameter	Value
Application:	Spraying
Mixing ratio (by weight):	TP95.00.10 100 HP95.00.00 100 Thinner 25-35
Pot life (at 20°C, h):	5-6
Recommended application weight (g/m ²):	160-180
Number of coats:	2
Drying time (100 g/m ² at 20°C, min):	Dust free: 10-15 Touch dry: 15-20 Sandable: 16-20 hours

Clear matt AC topcoat TA53.00.XX

Acrylic based fast drying matt self-sealer. Particularly suitable for open pore coatings. The topcoat is UV resistant and can be used for all kinds of wooden surfaces such as solid wood and veneer (especially on light colored woods, white and pastel painted surfaces).

Parameter	Value
Application:	Conventional, airmix spray
Gloss level:	5, 10, 25
Mixing ratio (by weight):	TA53.00.25 100 HA53.00.00 10 Thinner 35-50
Pot life (at 20°C, h):	min 7
Recommended application weight (g/m ²):	100-130
Drying time (100 g/m ² at 20°C, min):	Dust free: 25-30 Touch dry: 40-50 Sandable: 6 hours
Forced drying (100 g/m ²):	Evaporation at 20°C: 15-20 min Drying at 50°C: 50-60 min Cooling at 20°C: 10-15 min

Clear matt AC topcoat TA54.00.10

TA54.00.10 is highly transparent lacquer with very homogeneous mat appearance. It forms soft touch and flexible film with high yellowing resistance. Particularly suitable for open pore coatings and light colored surfaces.

Parameter	Value
Application:	Conventional, airmix spray
Gloss level:	10
Mixing ratio (by weight):	TA54.00.10 100 HA53.00.00 10 Thinner 35-50
Pot life (at 20°C, h):	min 8
Recommended application weight (g/m ²):	100-130
Drying time (100 g/m ² at 20°C, min):	Dust free: 25-30 Touch dry: 40-50 Sandable: 3-4 hours
Forced drying (100 g/m ²):	Evaporation at 20°C: 20 min Drying at 50°C: 50 min Cooling at 20°C: 15 min



High gloss AC topcoat AG56.00.00

High gloss acrylic lacquer of high transparency and gloss level. Non-yellowing. Dries quickly and can be polished after 36 hours. Suitable for vertical application.

Parameter	Value
Application:	Spraying
Gloss level:	97±2
Mixing ratio (by weight):	AG56.00.00 100 HA56.00.00 50 Thinner 50-60
Pot life (at 20°C, h):	3
Recommended application weight (g/m ²):	100-140
Drying time (100 g/m ² at 20°C, min):	Dust free: 15-20 Touch dry: 180-240 Stackable: 36 hours
Forced drying (100 g/m ²):	Evaporation at 20°C: 25 min Drying at 40°C: 360 min Cooling at 20°C: 20 min



Glossy NC topcoat NG10.00.00

Highly transparent glossy lacquer for solid wood and veneer. Can be applied by manual or automatic spraying of any type.

Parameter	Value
Application:	Conventional, airmix, airless spray
Gloss level:	90
Mixing ratio (by weight):	NG10.00.00 100 Thinner 80-100
Pot life (at 20°C, h):	Not limited
Recommended application weight (g/m ²):	100-150
Drying time (100 g/m ² at 20°C, min):	Dust free: 10 Touch dry: 30 Stackable: 5 hours
Forced drying (100 g/m ² at 40°C, min):	Stackable: 40

Matte NC topcoat TN10.00.15

Matt NC self-sealer. Highly transparent, has high capacity of thinner. Can be applied by manual or automatic spraying of any type.

Parameter	Value
Application:	Conventional, airmix, airless spray
Gloss level:	15
Mixing ratio (by weight):	TN10.00.15 100 Thinner 100-110
Pot life (at 20°C, h):	Not limited
Recommended application weight (g/m ²):	100-120
Number of coats:	2-3
Drying time (100 g/m ² at 20°C, min):	Dust free: 10 Touch dry: 40 Stackable: 8 hours



White PU converter TP55.01.XX

PU high pigmented matt topcoat – color reproduction converter for tintometric system, can be also used as white topcoat. Ideal base for pastel color preparation. It has high covering power and good superficial hardness.

Parameter	Value
Application:	Conventional, airmix, airless spray
Gloss level:	10, 25
Mixing ratio (by weight):	TP55.01.25 100 HP55.00.00 50 Thinner 20-30
Pot life (at 20°C, h):	7
Recommended application weight (g/m ²):	100-120
Number of coats:	1
Drying time (100 g/m ² at 20°C, min):	Dust free: 15-20 Touch dry: 30-40 Stackable: 6-7 hours

Transparent PU converter TP55.00.XX

Transparent PU converter for tintometric system. Ideal base for saturated colors preparation.

Parameter	Value
Application:	Conventional, airmix, airless spray
Gloss level:	25
Mixing ratio (by weight):	TP55.00.25 100 HP55.00.00 50 Thinner 15-30
Pot life (at 20°C, h):	5
Recommended application weight (g/m ²):	100-120
Number of coats:	1
Drying time (100 g/m ² at 20°C, min):	Dust free: 15 Touch dry: 40 Stackable: 5-6 hours

TINTING SYSTEM



PIGMENTED TOPCOATS

White matte PU topcoat TP51.01.XX

White PU enamel with a high solids content, fills sanding marks very well. Gloss level: 20 or 10%. Suitable for solid wood and veneered doors, MDF panels. Can be applied by manual or automatic spraying of any type, provides a uniform matte finish.

Parameter	Value
Application:	Conventional, airmix, airless spray
Gloss level:	10, 20
Mixing ratio (by weight):	TP51.01.20 100 HP50.00.00 25 Thinner 25-35
Pot life (at 20°C, h):	4-5
Recommended application weight (g/m ²):	100-150
Drying time (100 g/m ² at 20°C, min):	Dust free: 10 Touch dry: 20 Stackable: 5 hours
Forced drying (100 g/m ² at 40°C):	Stackable: 1.5 hours

White high gloss PU topcoat PG57.01.00

Enamel particularly suitable for bathroom furniture. It is characterized by perfect leveling, fast drying, easy polishing. Coating has a high degree of gloss and good resistance to yellowing.

Parameter	Value
Application:	Spraying
Gloss level:	95±2
Mixing ratio (by weight):	PG57.01.00 100 HP57.00.00 50 Thinner 30-40
Pot life (at 20°C, h):	5
Recommended application weight (g/m ²):	120-150
Drying time (100 g/m ² at 20°C, min):	Dust free: 10-15 Touch dry: 60-70 Stackable: 24 hours
Forced drying (100 g/m ²):	Evaporation at 20°C: 25 min Drying at 40°C: 360 min Cooling at 20°C: 20 min





White matte AC topcoat TA20.0110

White enamel with a gloss level of 10%. Does not turn yellow during the coating life cycle. Particularly suitable for open pore finishing. Provides excellent hiding power and even matte appearance.

Parameter	Value
Application:	Spraying
Gloss level:	10
Mixing ratio (by weight):	TA20.0110 100 HA53.00.00 10 Thinner 100-110
Pot life (at 20°C, h):	min 12
Recommended application weight (g/m ²):	130-150
Drying time (100 g/m ² at 20°C, min):	Dust free: 5-10 Touch dry: 20-30 Stackable: 8 hours
Forced drying (100 g/m ²):	Evaporation at 20°C: 5-10 min Drying at 40°C: 40-50 min Cooling at 20°C: 10-15 min

White matte NC topcoat TN10.0110

White enamel with a gloss level of 10%. Designed for finishing solid wood, veneered furniture. Has a high hiding power and fast drying. Can be applied by manual or automatic spraying of any type.

Parameter	Value
Application:	Conventional, airmix, airless spray
Gloss level:	10
Mixing ratio (by weight):	TN10.0110 100 Thinner 80-100
Pot life (at 20°C, h):	Not limited
Recommended application weight (g/m ²):	80-100
Drying time (100 g/m ² at 20°C, min):	Dust free: 10 Touch dry: 40 Stackable: 5 hours

Black matte NC topcoat TN10.2210

Black enamel with a gloss level of 10%. Designed for finishing solid wood, veneered furniture. Has a high hiding power and fast drying. Can be applied by manual or automatic spraying of any type.

Parameter	Value
Application:	Conventional, airmix, airless spray
Gloss level:	10
Mixing ratio (by weight):	TN10.2210 100 Thinner 80-100
Pot life (at 20°C, h):	Not limited
Recommended application weight (g/m ²):	80-100
Drying time (100 g/m ² at 20°C, min):	Dust free: 10 Touch dry: 40 Stackable: 5 hours



Water-based matt topcoat TW55.0115

TW55.0115 is white 2K water based converter for glass finishing. It has excellent adhesion on glass, high water resistance, high hiding power.

Parameter	Value
Application:	Conventional, airmix, airless spray
Gloss level:	15
Mixing ratio (by weight):	TW55.0115 100 Hardener 2
Recommended application weight (g/m ²):	80-120
Drying time (100 g/m ² at 20°C, min):	Dust free: 30 Touch dry: 45 Stackable: 36 hours



Wood stain SS95.XX.00

Concentrated solvent-based stain that provides a vivid and bright appearance without disrupting the natural of the wood. It is fast drying and has high coloring power.

Application:	Spraying, pouring, dipping, rubbing
Mixing ratio (by weight):	SS95.XX.00 100 Thinner 200-1000
Recommended application weight (g/m ²):	70-100
Number of coats:	To the desired surface shade
Drying time:	Depending on the thinner used

STAINS

SS95.69.00 Orange			SS95.56.00 Parliament Blue
SS95.07.00 Tobacco			SS95.58.00 Green
SS95.13.00 White			SS95.72.00 Black
SS95.14.00 Ocean Blue			SS95.84.00 Antique Walnut
SS95.25.00 Red			SS95.87.00 Dark Walnut
SS95.33.00 Oak			SS95.88.00 Brown Mahogany
SS95.43.00 Dark nut			SS95.90.00 Dark Mahogany
SS95.51.00 Dark oak			SS95.92.00 Walnut
SS95.52.00 Mahogany			SS95.93.00 Nut
SS95.54.00 Yellow			SS95.96.00 Wenge

PATINAS

Acrylic base for patinas M091.00.00

Patinas are the best choice to achieve special effects or accents wood pores, corners and fake damage, reminiscent of antique furniture. 1K acrylic base is characterized by high performance in open pore applications, transparent homogeneous matt film, resistance to yellowing.

Parameter	Value
Application:	Spraying
Mixing ratio (by weight):	M091.00.00 100 Thinner 0-10
Recommended application weight (g/m ²):	90-100
Drying time (100 g/m ² at 20°C, min):	Dust free: 25-30 Touch dry: 40-50 Stackable: 1-3 hours

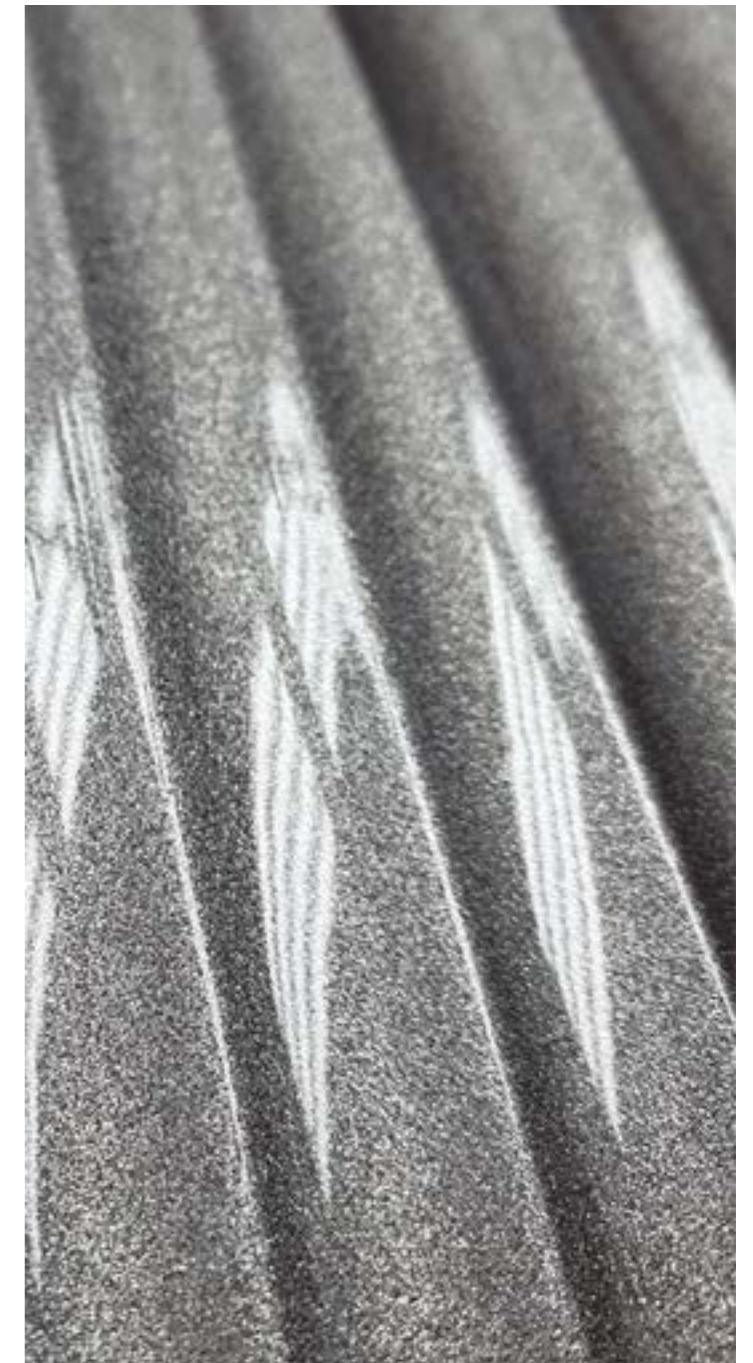


SPECIAL EFFECTS

Metallic and Pearl Pastes MP91.XX.00

Concentrated solvent-based paste to give metallic and pearl effects. Compatible with polyurethane, acrylic, cellulose bases. Can be used for interior furniture and decoration works on MDF. It is applied by adding 1-20% MP91.XX.00 Metallic Pastes or 1-5% Pearl Paste into 1K Acrylic Base. Can be colored with colorants depending on demand.

MP91.20.00 - GOLD
MP91.30.00 - BRONZE
MP91.70.00 - SILVER
MP91.80.00 - PEARL



Casting epoxy resin SE18.00.00

Ultra-transparent epoxy resin. Has a high yellowing resistance, excellent chemical and physical resistance, high gloss before and after polishing. Excellent levelling and wetting properties, minimal foaming, high thickness application at once.

Parameter	Value
Application:	Casting
Mixing ratio (by weight):	SE18.00.00 100 HS18.00.00 33
Pot life (at 20°C, h):	10
Layer thickness, mm:	10-150
Full polymerization:	7 days

OTHER MATERIALS

